



PORT METRO
vancouver

Preparing for the Games

*Planning for the
Vancouver
2010 Olympic
and Paralympic
Winter Games*



vancouver 2010

OFFICIAL SUPPLIER
FOURNISSEUR OFFICIEL



PORT METRO
vancouver

Agenda

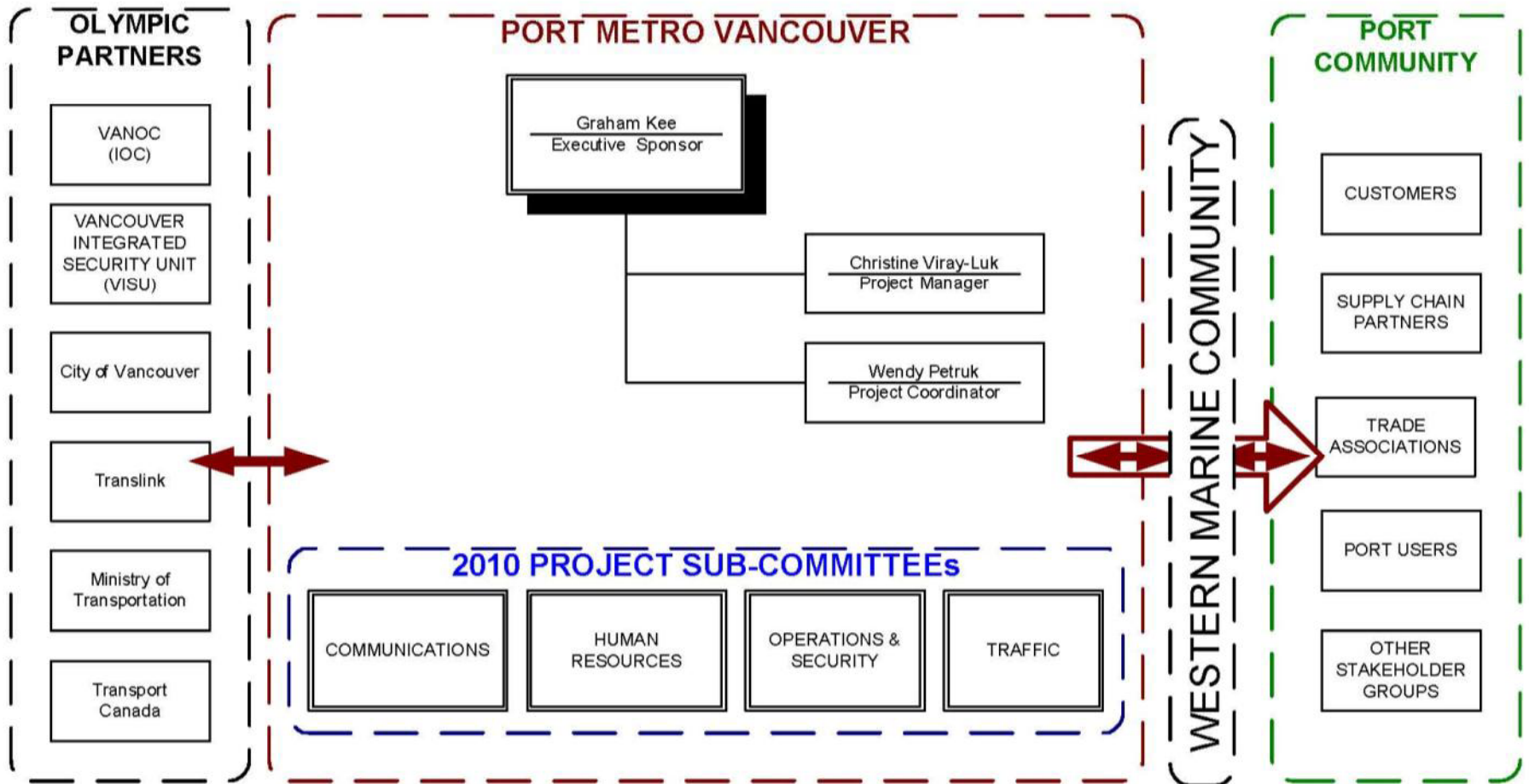
- Welcome
- Partners
- Resources
- Panel Presentations
- Discussion and Questions
- Closing Remarks



vancouver 2010

OFFICIAL SUPPLIER
FOURNISSEUR OFFICIEL

Partners



Resources

portmetrovancover.com/2010

- Learn more about:
 - Access
 - Cargo
 - Traffic
- Frequently Asked Questions
- Contact information

The screenshot shows the Port Metro Vancouver website for the 2010 Winter Games. The page features a search bar at the top right with a 'PGP LOGIN' button and links for 'Site Map' and 'Contact List'. The main navigation bar includes 'About the Port', 'In Your Community', 'The Environment', 'Port Users', 'Projects & Planning', and 'Opportunities'. A 'SHORTCUTS' section is also present. The main content area is titled 'Vancouver 2010 Winter Games' and includes a 'Back to Home' link. The primary article, 'Port Metro Vancouver and the 2010 Winter Games', details the port's role as the official supplier and provides information on standard operating procedures, access, cargo, and traffic during the games. A sidebar on the left lists 'Updates', 'Access', 'Cargo', 'Traffic', and 'FAQs'. A right sidebar contains a 'vancouver 2010' logo, 'Learn more' link, 'Download' section with a 'Port Metro Vancouver 2010 Handbook' link, 'On portmetrovancover.com' section with links to 'Vancouver 2010 sails into Port Metro Vancouver', 'Frequently Asked Questions', and '2010 Updates', 'External links' section with links to 'Vancouver 2010', 'Western Marine Community Coalition', 'Translink', 'Vancouver Airport Authority', 'Government of Canada', and 'City of Vancouver', 'Contact information' section with 'Vancouver office' details (phone: 604.665.9000, fax: 1.866.284.4271, email link), 'Address' (100 The Pointe, 999 Canada Place, Vancouver, BC V6C 3T4), and a 'Map' link. A footer note states: 'To contact Port Metro Vancouver Operations & Security any time, including...'. The page is marked with an 'Internet' icon in the bottom right corner.

Resources

portmetrovancover.com/2010

- Learn more about:
 - Access
 - Cargo
 - Traffic
- Frequently Asked Questions
- Contact information
- **2010 Handbook**

The screenshot shows the Port Metro Vancouver website interface for the 2010 Winter Games. The top navigation bar includes 'About the Port', 'In Your Community', 'The Environment', 'Port Users', 'Projects & Planning', and 'Opportunities'. A search bar and 'PGP LOGIN' are also visible. The main content area is titled 'Vancouver 2010 Winter Games' and contains a section for 'Port Metro Vancouver and the 2010 Winter Games'. A sidebar on the left lists 'Updates', 'Access', 'Cargo', 'Traffic', and 'FAQs'. A callout box on the right points to a 'Download' link for the 'Port Metro Vancouver 2010 Handbook'. Below the screenshot is a red graphic representing the '2010 Handbook' cover, which includes the Port Metro Vancouver logo, contact information, and the text 'Planning for the Vancouver 2010 Olympic and Paralympic Winter Games'.



portmetrovancover.com

Communication during the Games

- Daily briefings to discuss emerging issues
- Monitoring of traffic, labour, security, and media
- Inputs from external partners, including:
 - BCMEA
 - Western Marine Community
 - Transport Canada
 - ISU and CSIS
- Updates as needed on portmetrovancover.com/2010
- Issues management framework in place
 - If issues arise, call your usual PMV contact, OR
 - Port Operations & Security, 604.665.9086 (24/7)



PORT METRO
vancouver

Panel Discussion

- Andrea Manchon, VANOC
- Yoss Leclerc, PMV
- Dan Guilfoyle, ISU
- Curtis Cloutier, PMV
- Don Nonis, TSI
- Andy Dawes, DP World
- Mike Leonard, BCMEA
- Stephen Brown, WMCC



Andrea Manchon

Vancouver Organizing Committee for the 2010 Olympic & Paralympic Winter Games



Yoss Leclerc

Port Metro Vancouver

- Marine operations and security update
 - Implementation of plan
 - Access & Security
 - Movement of vessels
 - Olympic Marine Operations Centre (OMOC)
 - Coal Harbour Security Enhancements

Coal Harbour Security Enhancements



Dan Guilfoyle

Integrated Security Unit



Curtis Cloutier

Port Metro Vancouver

Olympic Transportation Plan

Legend

Port Access PORT PASSES ARE REQUIRED AT ALL ACCESS POINTS. Visitors must enter via Commissioner St. and present valid ID.

- ISU, Port Employees
- Trucks, Port Employees, Service Vehicles
- Trucks, Port Employees, Service Vehicles, Visitors
- PMV South Shore Rd (Restricted Access)

- Roads
- Rails

Dangerous Goods Controlled Access Zone

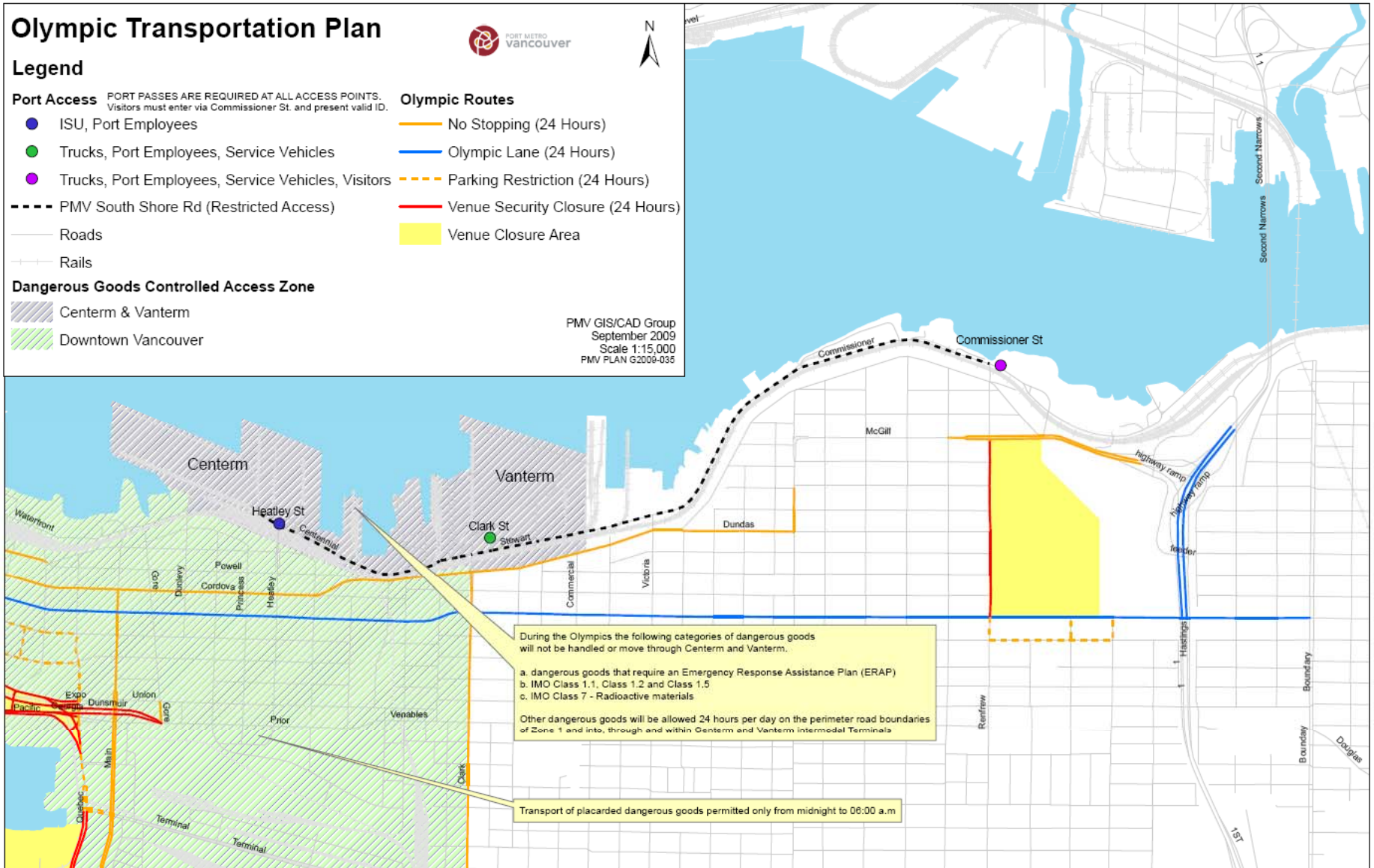
- ▨ Centerm & Vanterm
- ▨ Downtown Vancouver

Olympic Routes

- No Stopping (24 Hours)
- Olympic Lane (24 Hours)
- Parking Restriction (24 Hours)
- Venue Security Closure (24 Hours)
- Venue Closure Area



PMV GIS/CAD Group
September 2009
Scale 1:15,000
PMV PLAN G2009-035



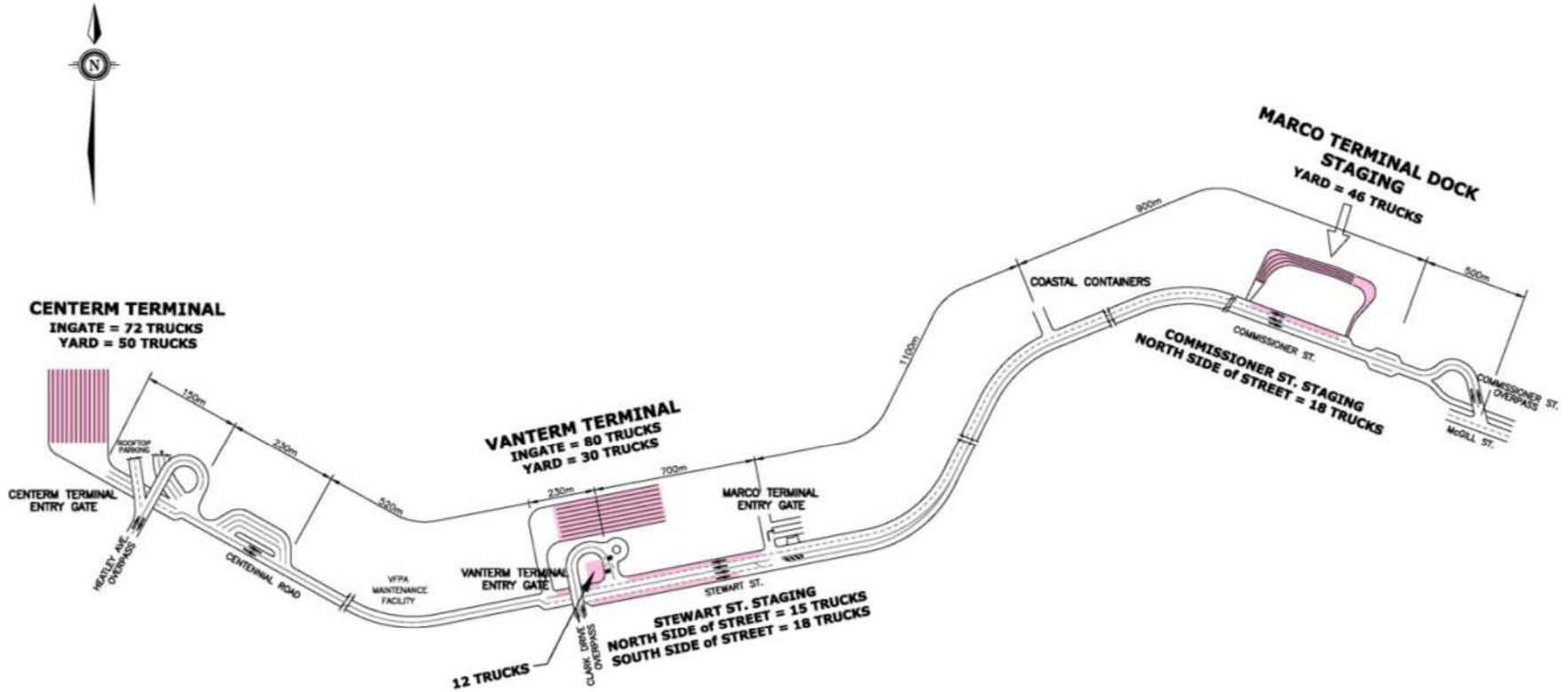
During the Olympics the following categories of dangerous goods will not be handled or move through Centerm and Vanterm.

- a. dangerous goods that require an Emergency Response Assistance Plan (ERAP)
- b. IMO Class 1.1, Class 1.2 and Class 1.5
- c. IMO Class 7 - Radioactive materials

Other dangerous goods will be allowed 24 hours per day on the perimeter road boundaries of Zone 1 and into, through and within Centerm and Vanterm intermodal Terminals

Transport of placarded dangerous goods permitted only from midnight to 06:00 a.m

South Shore Truck Staging Areas



Don Nonis

TSI



Terminal Systems Inc.



PORT METRO
vancouver

portmetrovancover.com

Andy Dawes

DP World



DP WORLD
Vancouver



PORT METRO
vancouver

portmetrovancover.com

Mike Leonard

BC Maritime Employers Association



portmetrovancover.com

Stephen Brown

Western Marine Community Coalition



PORT METRO
vancouver

portmetrovancover.com



PORT METRO
vancouver

Thank You

*Questions or
comments?*

For all inquiries,
please contact:

[2010info@
portmetrovancover.com](mailto:2010info@portmetrovancover.com)



vancouver 2010

OFFICIAL SUPPLIER
FOURNISSEUR OFFICIEL