



PORT METRO  
**vancouver**

## Preparing for the Games

*Planning for the  
Vancouver  
2010 Olympic  
and Paralympic  
Winter Games*



**vancouver 2010**

OFFICIAL SUPPLIER  
FOURNISSEUR OFFICIEL



PORT METRO  
**vancouver**

## Agenda

- Background
- Objectives
- Partners
- Timeline
- Impacts
- Our Commitment
- Opportunities



**vancouver 2010**

OFFICIAL SUPPLIER  
FOURNISSEUR OFFICIEL

# Background

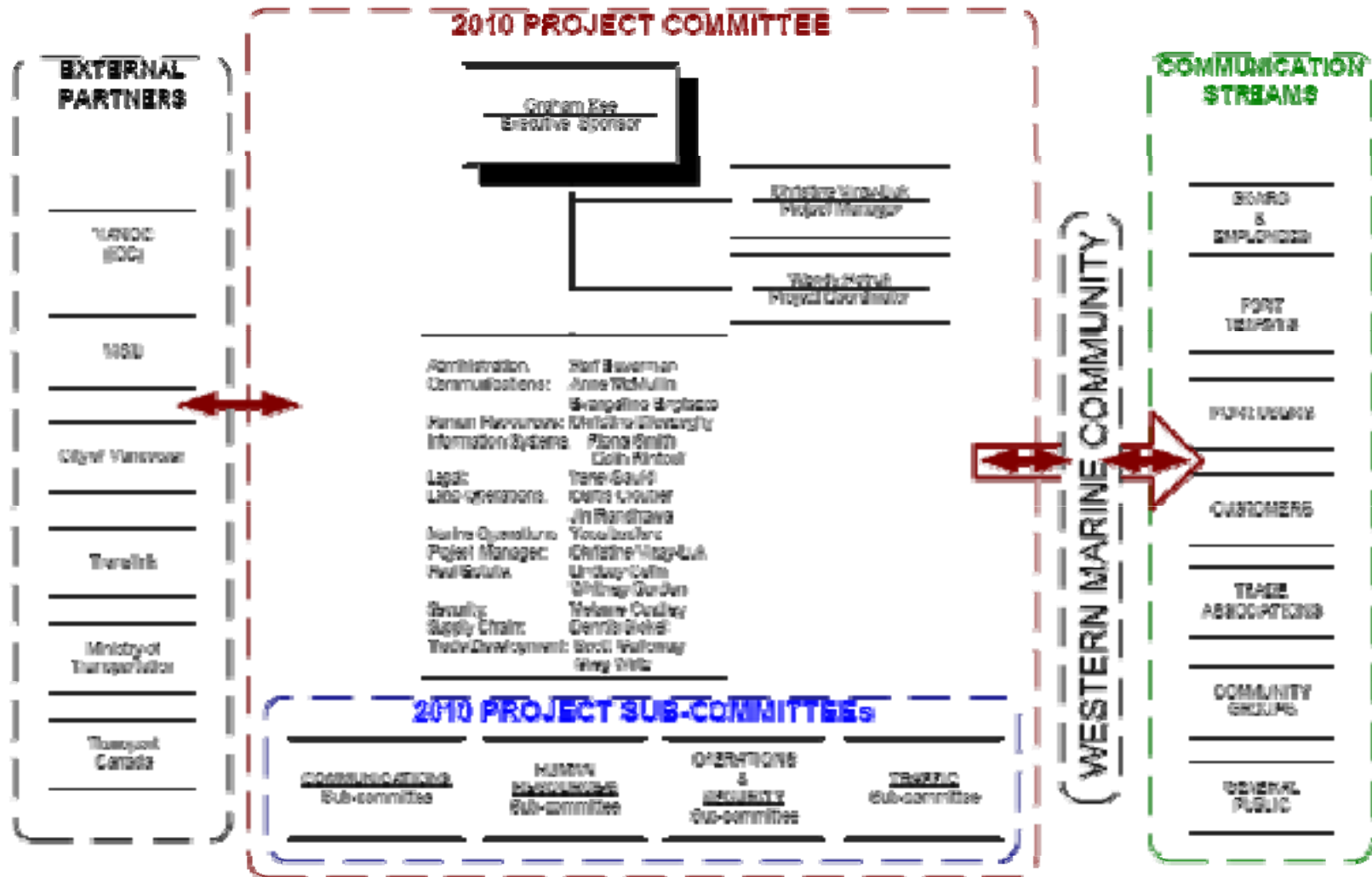
- VANOC requested specific space requirements from Port Metro Vancouver (PMV):
  - Canada Place cruise ship terminal
  - Waterfront Road parking lots
  - Portions of Richmond Properties
- A Value-In-Kind sponsorship agreement was developed.
- PMV is the “Official Port Service to the Vancouver 2010 Olympic & Paralympic Winter Games”:
  - sponsorship rights (Tier 3) for Vancouver 2010.
  - sponsorship rights for Canadian Olympic Team at Vancouver 2010 and London 2012 Games.

# Objectives

1. Mitigate operational impacts to Port business;
2. Maximize sponsorship opportunity before, during and after the Games.

- Formation of 2010 Committee with appropriate departmental resources
- Formation of 2010 Sub-committees to establish plans and protocols, addressing issues and risks
- Use of project management resource to:
  - Track important dates, tasks, issues and risks
  - Establish project charter and timeline

# Partners



# Timeline



Start of fit out

| 2007     |          |          | 2008     |          |          |          | 2009     |          |          |          | 2010     |          |          |
|----------|----------|----------|----------|----------|----------|----------|----------|----------|----------|----------|----------|----------|----------|
| <b>2</b> | <b>3</b> | <b>4</b> | <b>1</b> | <b>2</b> | <b>3</b> | <b>4</b> | <b>1</b> | <b>2</b> | <b>3</b> | <b>4</b> | <b>1</b> | <b>2</b> | <b>3</b> |
| Apr-Jun  | Jul-Sep  | Oct-Dec  | Jan-Mar  | Apr-Jun  | Jul-Sep  | Oct-Dec  | Jan-Mar  | Apr-Jun  | Jul-Sep  | Oct-Dec  | Jan-Mar  | Apr-Jun  | Jul-Sep  |

| <u>Phase 1</u>   | <u>Phase 2</u>   | <u>Phase 3</u>  | <u>Phase 4</u>   | <u>Phase 5</u>  |
|--|--|---|--|---|
| <b>Concept Planning</b> <ul style="list-style-type: none"> <li>•Venue Planning</li> <li>•Service Descriptions</li> <li>•Draft Policies &amp; Procedures</li> <li>•Organization Structures</li> <li>•Initial Resource Allocation</li> <li>•Initial Venue Designs</li> </ul> | <b>Detailed Planning</b> <ul style="list-style-type: none"> <li>•Venue Operating Plans</li> <li>•Policies &amp; Procedures</li> <li>•Detailed Staffing &amp; Resource Plans</li> <li>•Workforce Recruitment</li> <li>•Refine resource allocations</li> <li>•Test Event Plan</li> <li>•Shifting to Venue Teams</li> <li>•Paralympic Transition Planning</li> <li>•Draft Contingency Planning</li> <li>•Final Detailed Venue Design</li> </ul> | <b>Games Readiness Planning</b> <ul style="list-style-type: none"> <li>•Test Event Execution</li> <li>•Incorporate Event Lessons Learned</li> <li>•<b>Final Venue Operating Plans</b></li> <li>•Workforce Training</li> <li>•Refine operational venue design</li> <li>•Receive &amp; Deploy/Install resources</li> <li>•Games Readiness Exercises</li> <li>•Moving to the Venues</li> </ul> | <b>Games Time</b> <ul style="list-style-type: none"> <li>•<b>OLYMPIC Training &amp; Comp.</b></li> <li>•<b>PARA –LYMPIC Training &amp; Comp</b></li> </ul> | <b>Post Games</b> <ul style="list-style-type: none"> <li>•Recovery of Assets</li> <li>•Move-out of Venues</li> <li>•Post-Games Reports</li> <li>•Build Knowledge base</li> <li>•Business Closure</li> </ul> |

MMC timeline for use of Port spaces is dictated by cruise season



[portmetrovancover.com](http://portmetrovancover.com)

# Scope

**27** days of sport | February 12-March 21, 2010  
**1.6 million** visitors | **25,000** volunteers  
**15** competitive venues | **100+** non-competitive venues  
**150** Olympic & Paralympic medal events  
**6,800+** athletes and team officials | **80+** countries  
**10,000** media representatives  
**3 billion** worldwide television viewers

## *Our focus:*

- Surface transportation
- Marine operations
- Business continuity

# Our commitment

- Work collaboratively with partners and stakeholders to minimize impacts.
  - Western Marine Community
- Communicate operational impacts, including:
  - information on security, traffic, and road closures
  - supply chain impacts
  - weather and transit changes
  - incidents and emergency preparedness
  - other potential impacts of the Games

# Opportunities

- Provide PMV with any plans that may impact Games-time operations:
  - review policies and protocols
  - exchange information
  - synchronize timelines
- Keep informed of Games-time planning and activities, visit [portmetrovancover.com](http://portmetrovancover.com)



PORT METRO  
**vancouver**

## Preparing for the Games

*Planning for the  
Vancouver  
2010 Olympic  
and Paralympic  
Winter Games*



**vancouver 2010**

OFFICIAL SUPPLIER  
FOURNISSEUR OFFICIEL



PORT METRO  
**vancouver**

## Panel discussion

- Dennis Bickel
- Yoss Leclerc
- Melanie Costley
- Dan Guilfoyle
- Andrea Manchon
- Stephen Brown



**vancouver 2010**

OFFICIAL SUPPLIER  
FOURNISSEUR OFFICIEL

# Dennis Bickel

Port Metro Vancouver

- Implications to major gateway transportation corridors (truck, rail and passenger).
  - Effects of accommodation vessels and unscheduled movements of “protected persons” motorcades
  - Changes to pedestrian traffic patterns, including increased West Coast Express movements
  - Potential changes to movement of Dangerous Goods
- *Mitigation:*
  - Develop a transportation management plan in the vicinity of port property, to ensure efficient access and operations for the movement of goods during the Games.

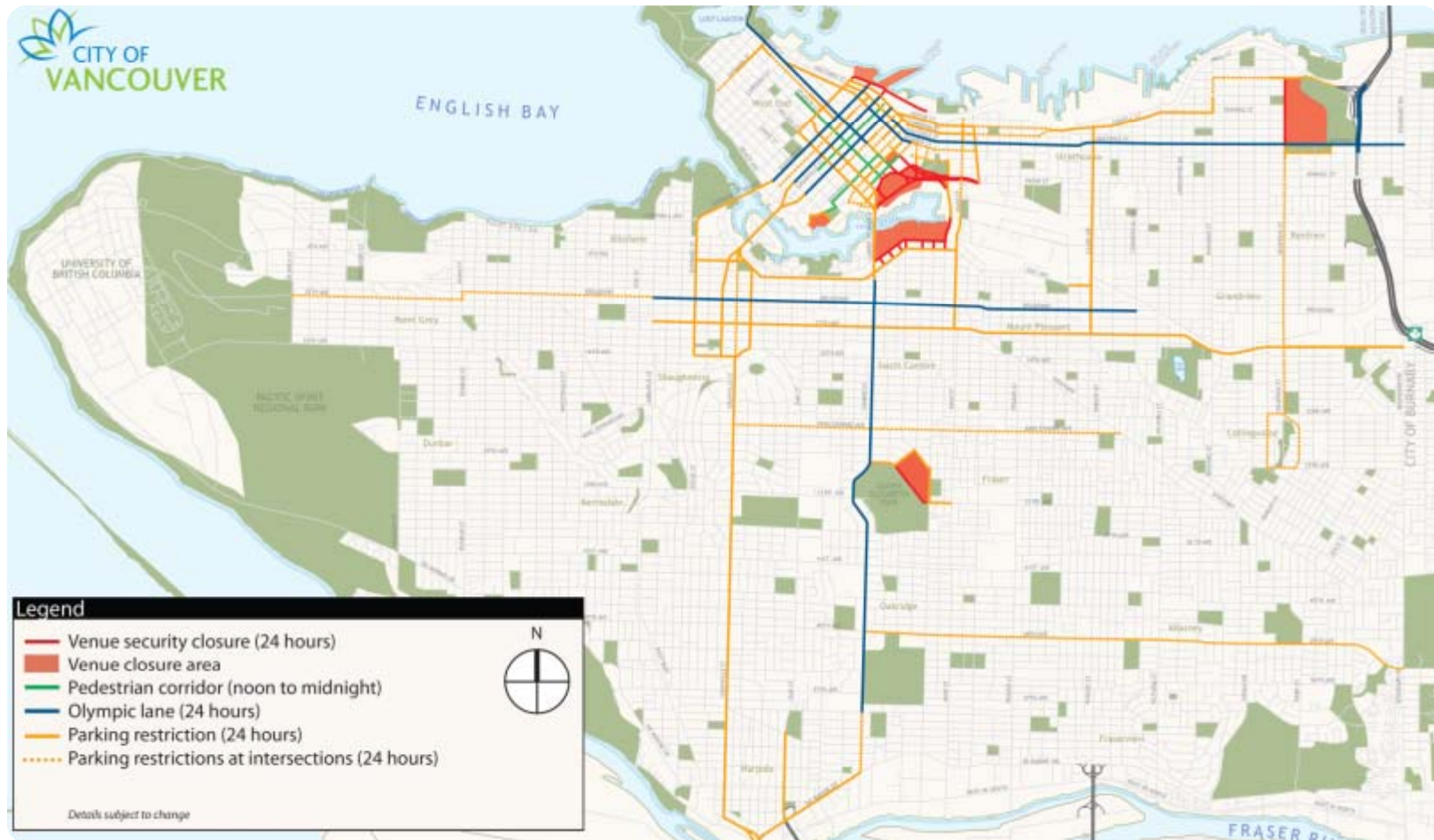
# Dennis Bickel

Port Metro Vancouver

- Traffic Management Plan to account for:
  - anticipated truck & rail activities
  - rail operating plans
  - terminal & tenant traffic management plans
  - dangerous goods movement
  - contingency plans

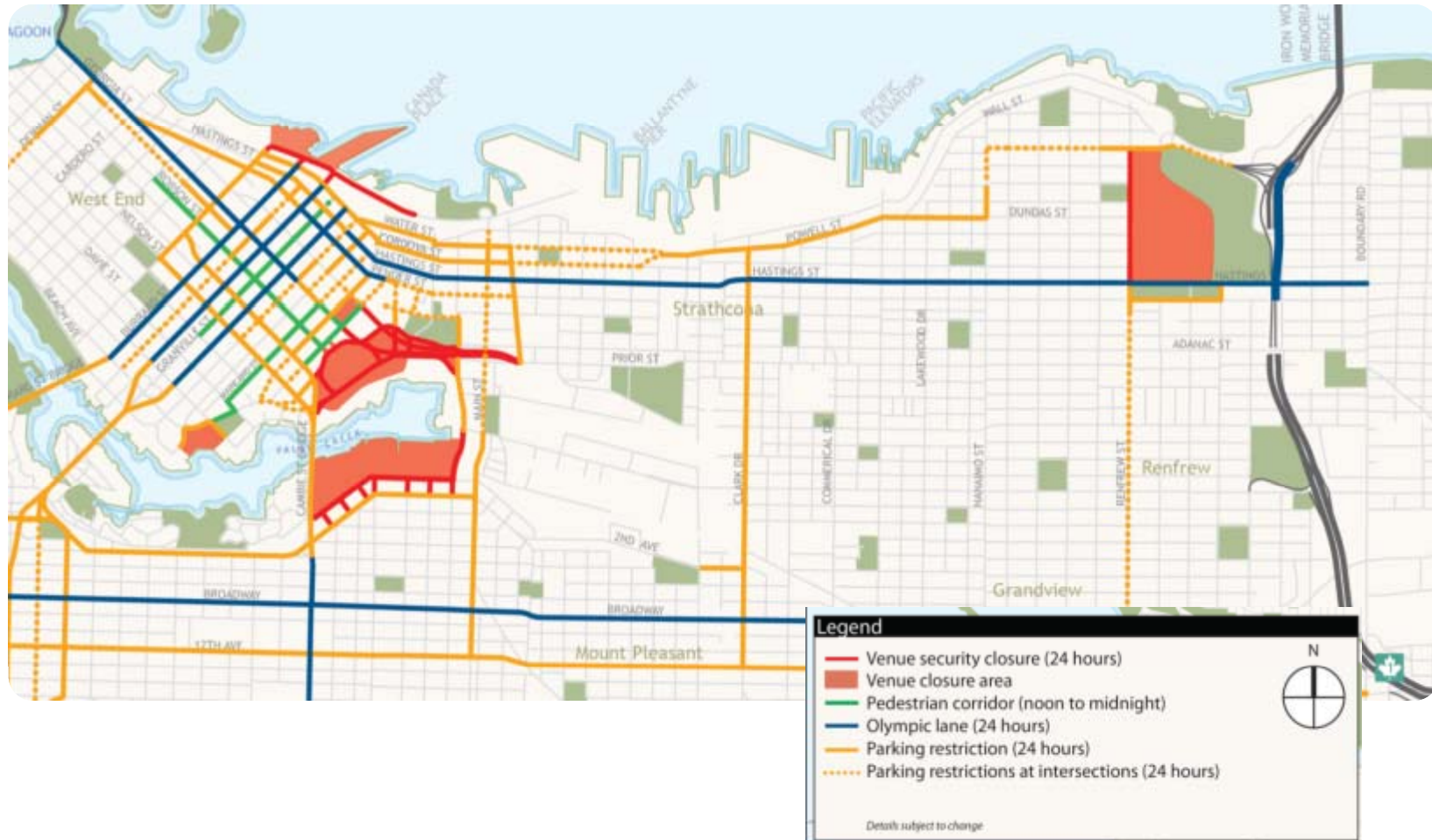
# Dennis Bickel

## Port Metro Vancouver



# Dennis Bickel

## Port Metro Vancouver



# Dennis Bickel

Port Metro Vancouver

- Changes to West Coast Express Service

|           | Weekdays |      | Weekends |      |
|-----------|----------|------|----------|------|
|           | Current  | 2010 | Current  | 2010 |
| Westbound | 5        | 8    | -        | 9    |
| Eastbound | 5        | 8    | -        | 7    |
| Total     | 10       | 16   | 0        | 16   |

# Yoss Leclerc

Port Metro Vancouver

- Impacts to port operational activities, including deep-sea, domestic, recreational, and harbour service vessels
- *Mitigation:*
  - Ensuring safe marine operational procedures are maintained during Games-time; and
  - Defining protocol for event permitting during the Games.

# Yoss Leclerc

Port Metro Vancouver

- Transport Canada
- Integrated Security Unit (ISU)
  - Accommodations Vessels
  - Marine Threat Risk Assessment
  - Marine Operations (Normal activity monitoring)
  - Security Exercises
    - Bronze – *complete*
    - Silver – *complete*
    - Gold – November 2009
  - Marine Security Plan
    - Patrol Zones
    - Control Access Zones
    - Exclusion Zones

# Melanie Costley

Port Metro Vancouver

- Impacts to port operational activities
- *Mitigation:*
  - Ensuring operational procedures are secure during Games-time;
  - Defining Port Pass Program in conjunction with accreditation process;
  - Defining protocol for equipment and information requests; and
  - Reviewing current operations, security & emergency procedural documentation in preparation for Games-time.

# Melanie Costley

Port Metro Vancouver

- Impacts to Port Authority's Vancouver office and surrounding businesses due to proximity to Games-time activities:
  - Main Media Centre at Canada Place and Accommodation Vessels on South Shore will result in increased security and changes to building access.
- *Mitigation:*
  - Developing guidelines regarding building access, staffing requirements, alternate work arrangements, and internal vacation approval timelines; and
  - Collaborating with Union on areas that relate to the Collective Agreement.



PORT METRO  
**vancouver**

## Questions

*Planning for the Vancouver  
2010 Olympic and Paralympic  
Winter Games*





PORT METRO  
**vancouver**

Thank You

For more information,  
please contact:

[wendy.petruk@  
portmetrovancover.com](mailto:wendy.petruk@portmetrovancover.com)



**vancouver 2010**

OFFICIAL SUPPLIER  
FOURNISSEUR OFFICIEL