



# Vancouver 2010 ISU Port Stakeholder Info Session



**Sgt. Dan Guilfoyle**  
**Marine/Rail/Dangerous Goods Planner**  
**Vancouver 2010 Integrated Security Unit**  
**Vancouver 2010 Olympic and Paralympic Winter Games**

January 14, 2010

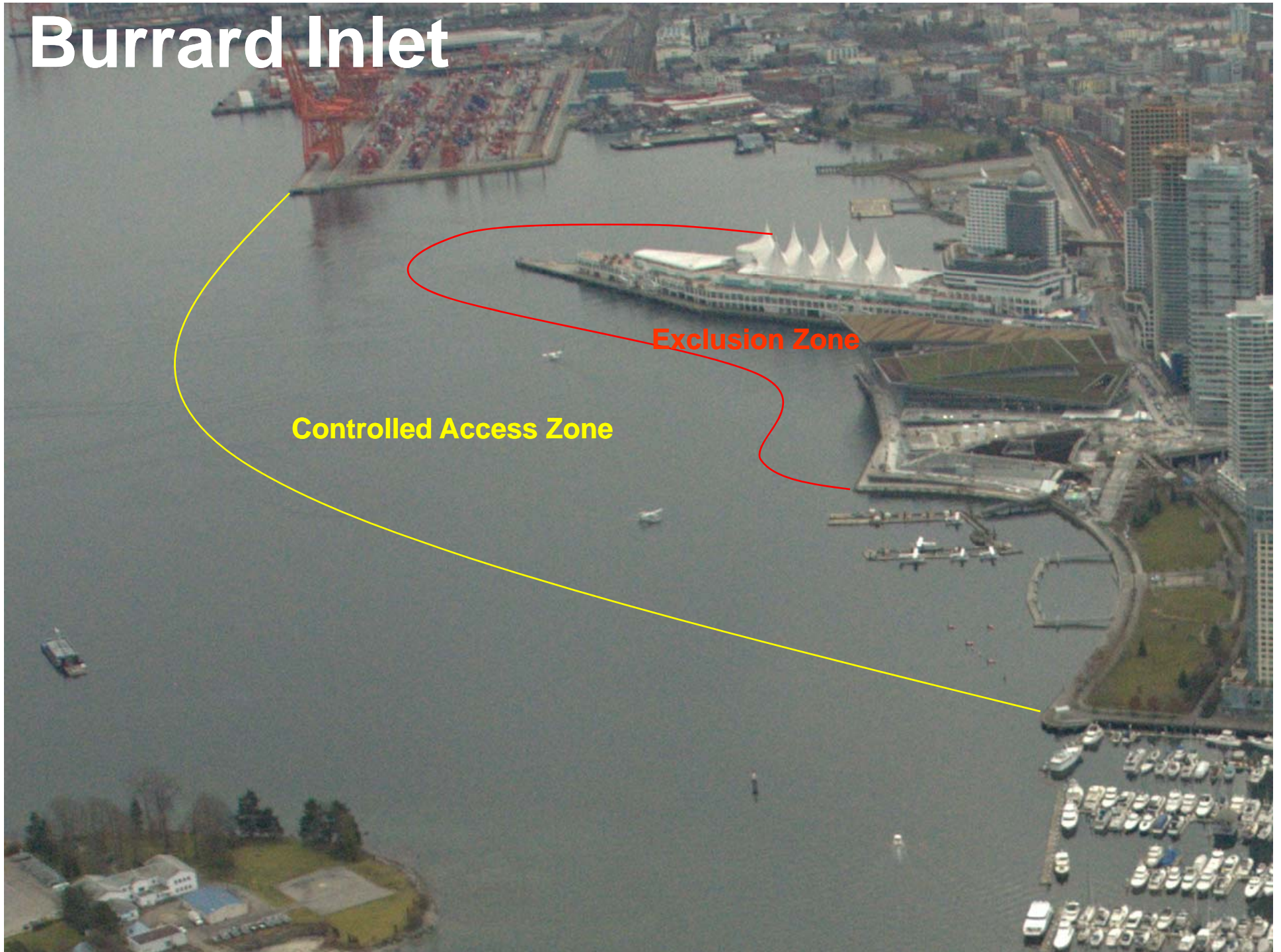




# Marine Key Messages

- Exclusion Zones and Controlled Access Zones within Burrard Inlet starting January 10<sup>th</sup> (Accommodation vessel) through March 25<sup>th</sup>
- Buoys and barriers will be in the water to identify security zones
- Look for Notice to Mariners and Notice to Shipping with detailed directions
- If required, contact Olympic Marine Security patrols on VHF channel 9 or 16

# Burrard Inlet



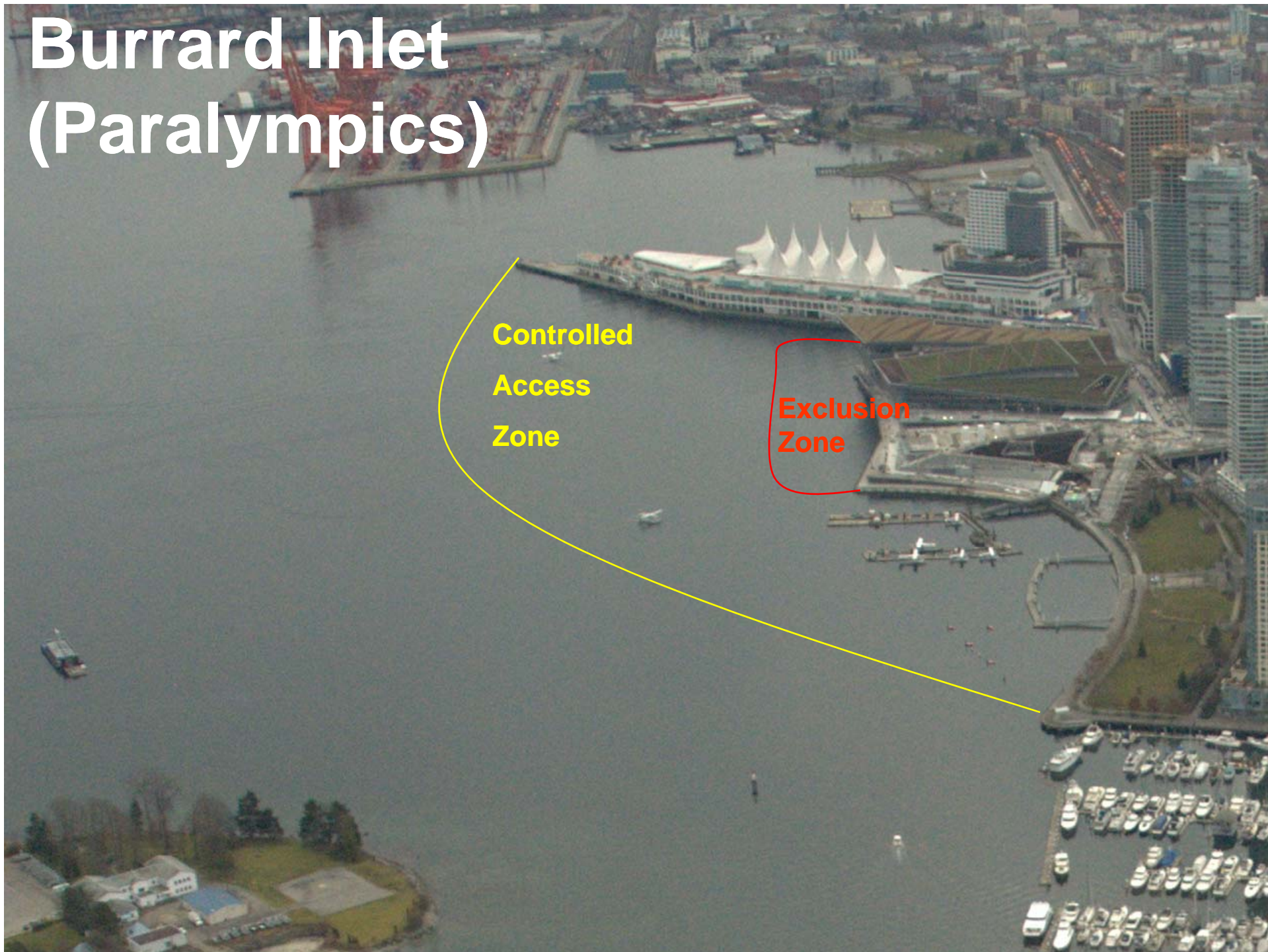
**Exclusion Zone**

**Controlled Access Zone**

# Burrard Inlet (Paralympics)

**Controlled  
Access  
Zone**

**Exclusion  
Zone**





# Ballantyne Pier – Accommodations Vessels



*Securing the best Winter Games ever as partners in safety, peace and celebration*



# Ballantyne Pier Key Messages

- RCMP and CF have worked with Port Metro Vancouver and DP World to minimize any disruption to day to day Port Operations
- Security perimeters are in place both on land and in the water: fencing on land and barrier in the water
- Look out for us and we will look out for you!



# TDG Key Messages

- Interim Orders under the TDG Act: control zones and time of day controls expected to be signed off by Transport Minister for January 26<sup>th</sup> implementation.
- VANTERM and CENTERM: 24/7 access for placarded vehicles but high hazard dangerous goods (ERAP) prohibited as well as classes of explosives and radioactive materials
- Olympic Surface Coordination Centre: active January 26<sup>th</sup> , contact number 604-666-5228 for Rail or TDG inquiries with Transport Canada & ISU



# Sources of Information

- [www.v2010isu.ca](http://www.v2010isu.ca)
- [www.tc.gc.ca](http://www.tc.gc.ca)
- [travelsmart2010.ca](http://travelsmart2010.ca)
- [portmetrovanancouver.com](http://portmetrovanancouver.com)