

# DELTAPORT 3

## Scientific Advisory Committee

---

To provide scientific and technical advice and recommendations to the VFPA and, upon request to Environment Canada, in relation to the implementation of the Adaptive Management Strategy

# DP3 AMS



- 
- prepared by VFPA and Hemmera Envirochem Inc. in response to Environmental Assessment (and in consultation with Environment Canada, Fisheries and Oceans Canada, Canadian Environmental Assessment Agency, etc.)
  - science-based systematic approach
  - 5 year+ program
  - assesses potential for significant negative trends in the Roberts Bank ecosystem
  - allows for extra information and mitigative actions



# DATA COLLECTED AND COMPILED BY HEMMERA, -THEN REVIEWED BY SAC

---

## Coastal geomorphology

crest protection structure, suspended solids,  
turbidity, erosion and deposition, sediment  
samples, mapping and ortho photos

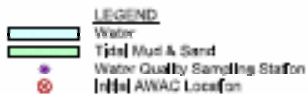
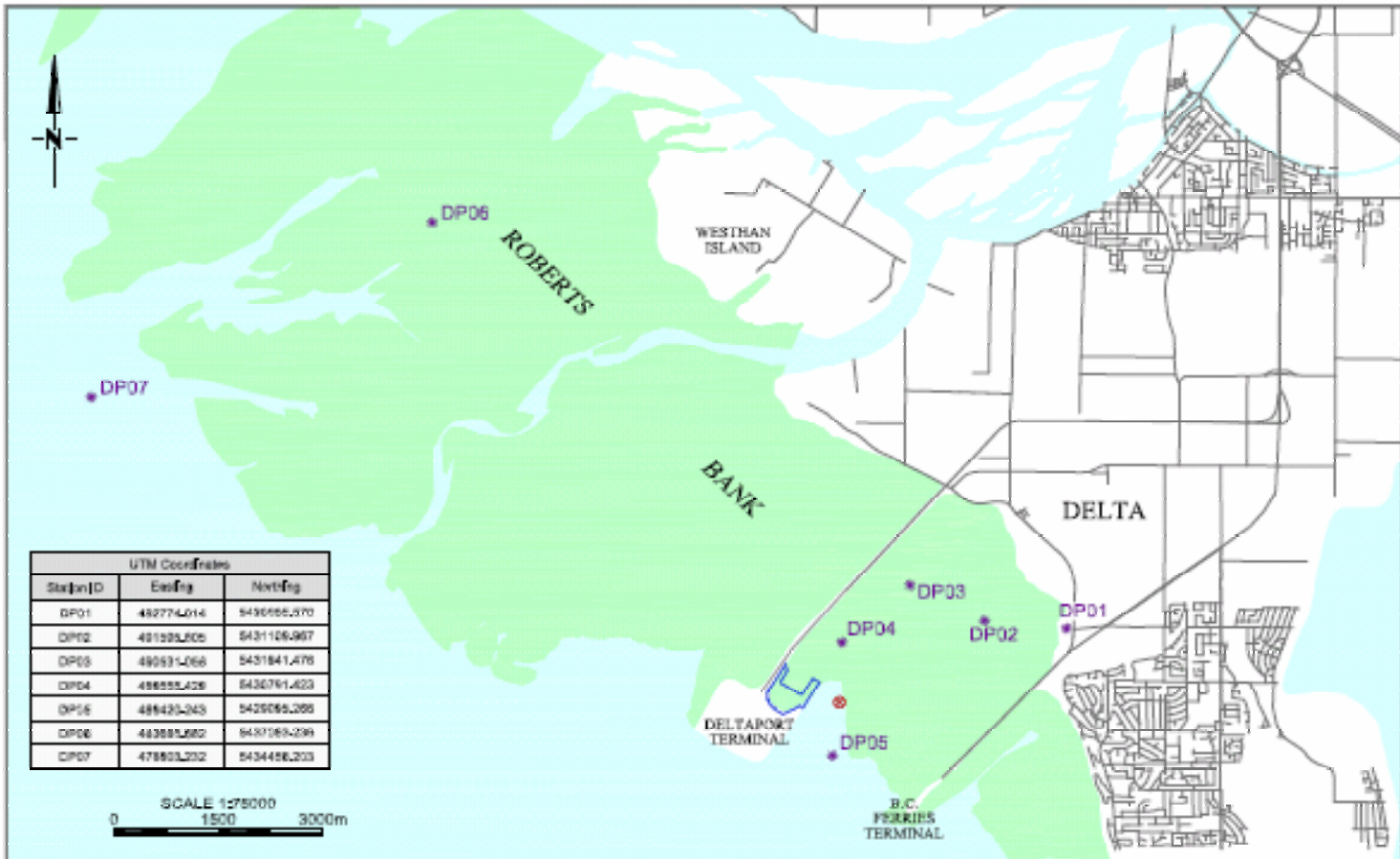
## Surface Water Quality

### Sediment Quality

### Eelgrass

### Benthic Community

### Birds



**HEMMERA**

CLIENT:



VANCOUVER PORT  
AUTHORITY

DELTA PORT THIRD BERTH - ADAPTIVE MANAGEMENT  
STRATEGY PROGRAM Q2 - 2007 REPORT

**SURFACE WATER, SEDIMENT &  
BENTHIC INVERTEBRATE SAMPLING STATIONS**

PROJECT NO.

499-002.11

October 2007

FIGURE 5

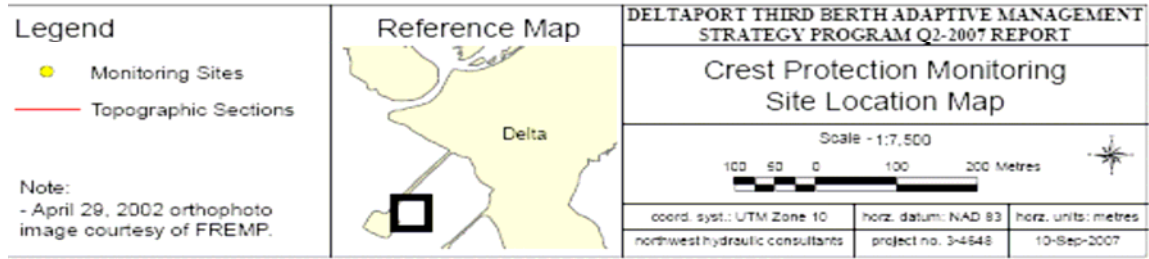
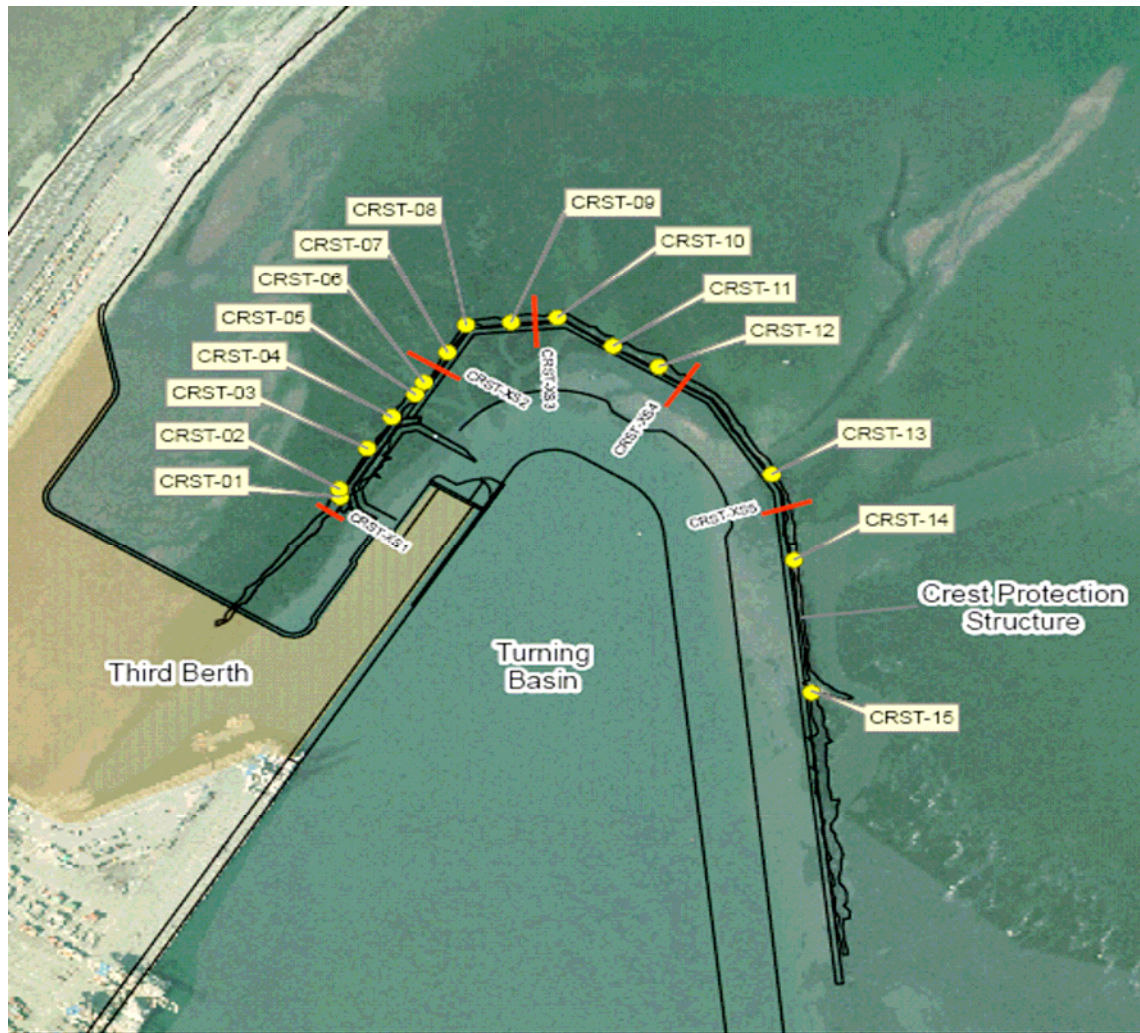
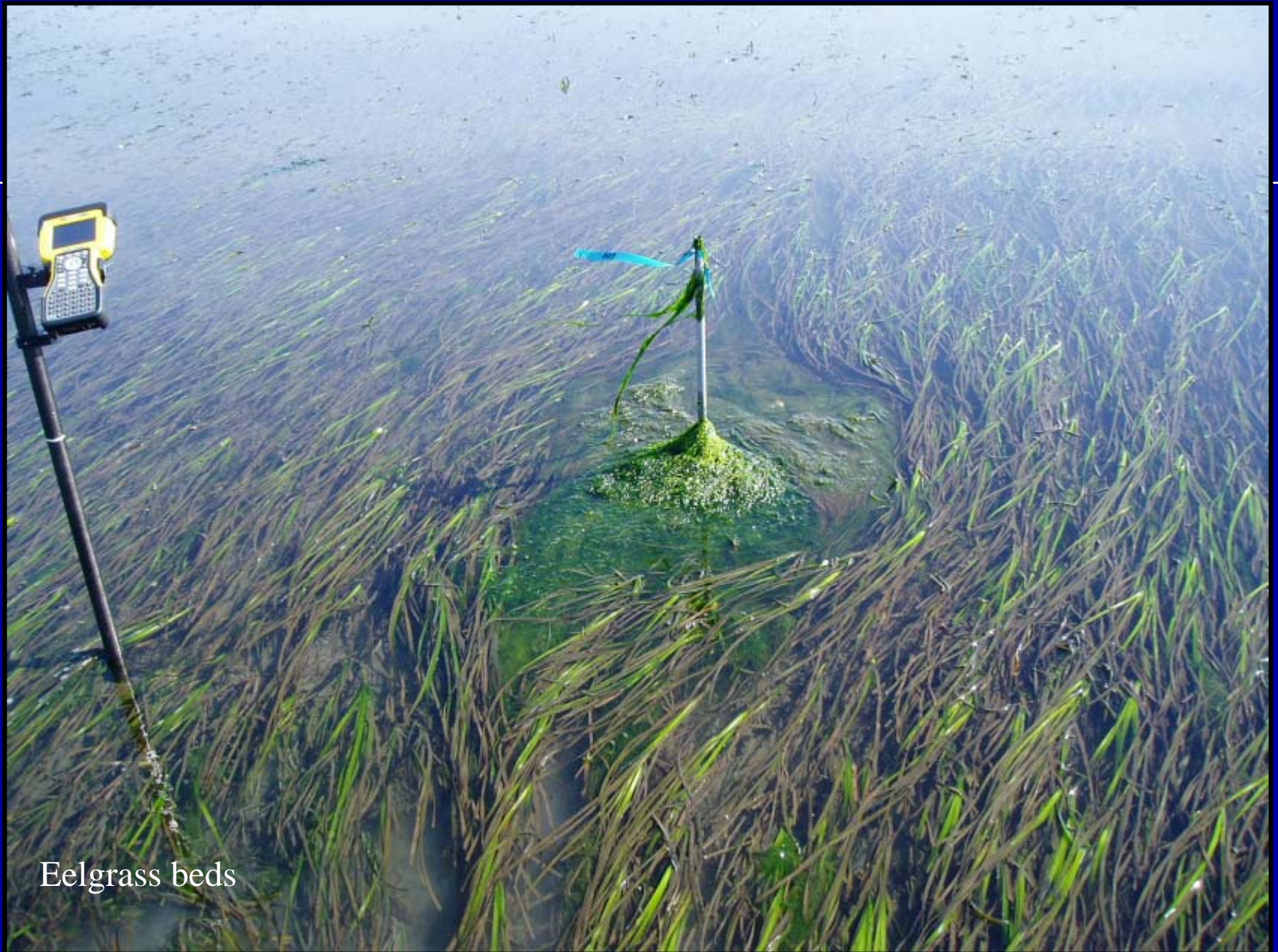


Figure 2

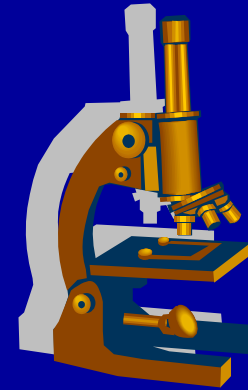


Hemmera employee on the Crest Protection Structure



Eelgrass beds

# SAC Composition



---

Scientist appointed by Environment Canada  
Dr. Teri Sutherland  
Research Scientist  
DFO

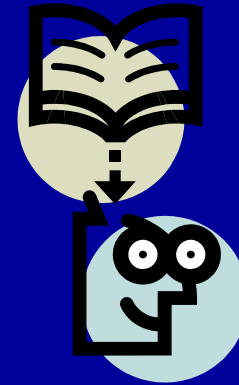
# SAC Composition



---

Scientist appointed by VFPA  
Mr. Rowland Atkins  
Senior Geomorphologist  
Golder Associates

# SAC Composition



---

Independent scientist selected jointly  
by VFPA and EC; to act as Chair

Dr. Ron Ydenberg  
Professor SFU  
Director, CWE

# SAC Composition



---

Secretariat  
Carolina Eliasson  
VFPA



**Dr. Ron Ydenberg**  
**Professor SFU, Director CWE**

---

Science in the service of public policy and social needs, defined broadly. Extensive research experience with government, private and academic organizations

## Five guidelines

- pose questions as fairly as possible
- frame answers as accurately as possible
- maintain a neutral stance wrt desired outcomes
- avoid public statements before there are adequate supporting data
- recognize that eventual decisions are social; scientific research plays but one part

# DELTAPORT 3

## Scientific Advisory Committee

---

To provide scientific and technical advice and recommendations to the VFPA and, upon request to EC, in relation to the implementation of the Adaptive Management Strategy

# SCHEDULE



SAC appointed  
First sampling

Spring 2007

Kick off meeting

April 30 2007

First quarter report  
Detailed work plan  
Tour of the site

June 27 2007

Second quarter report

November 2 2007

Third quarter report

December 18 2007