



PORT METRO  
**vancouver**

# Trucking Safety – Deltaport Way

Graham Kee (PMV)  
Michael Baker (TSI)

June 18, 2009



# Background

- Increased business at Deltaport.
- Back-up of trucks along Deltaport Way.
- Community safety concerns.



# Actions

- TSI has implemented the following strategies to address immediate issues:
  - Tuesday, Wednesday and Thursday night gates
  - Monday night gate and Saturday gate when volumes warrant
  - Reservations shifted from day to night shift
  - Addition of security to move truck traffic
  - More staffing and ongoing monitoring
  - Speed gates
  - Additional truck gate
  - Extra checker on busy days
  - Additional process computer station
  - Working through lunch
  - PMV is monitoring area on daily basis

# Truck Licensing System (TLS)

- PMV will continue to utilize TLS as a tool to improve safety and environmental standards for the container trucking fleet that services the Port.
- PMV continues to work with the Ministry of Transportation on information sharing agreement.
  - Information could be utilized as part of TLS enforcement.

# Meeting with Corporation of Delta

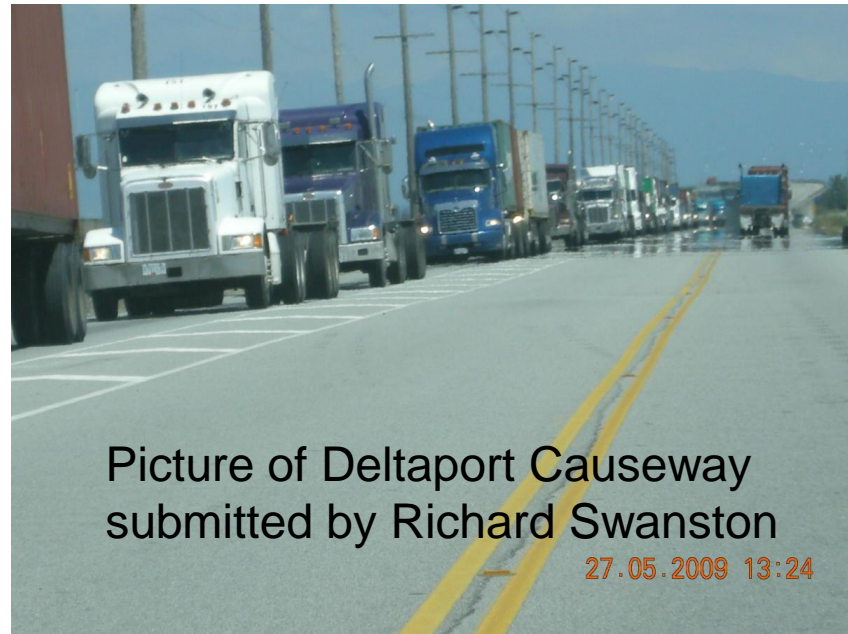
- PMV and TSI met with Delta, Delta Police, RCMP and MoT on June 5 to discuss this issue:
  - Agreed that trucking back-ups along Deltaport Way is unacceptable.
  - TSI can commit that this will not happen on a regular basis and that volumes increased with the introduction of a new shipping service on April 23.

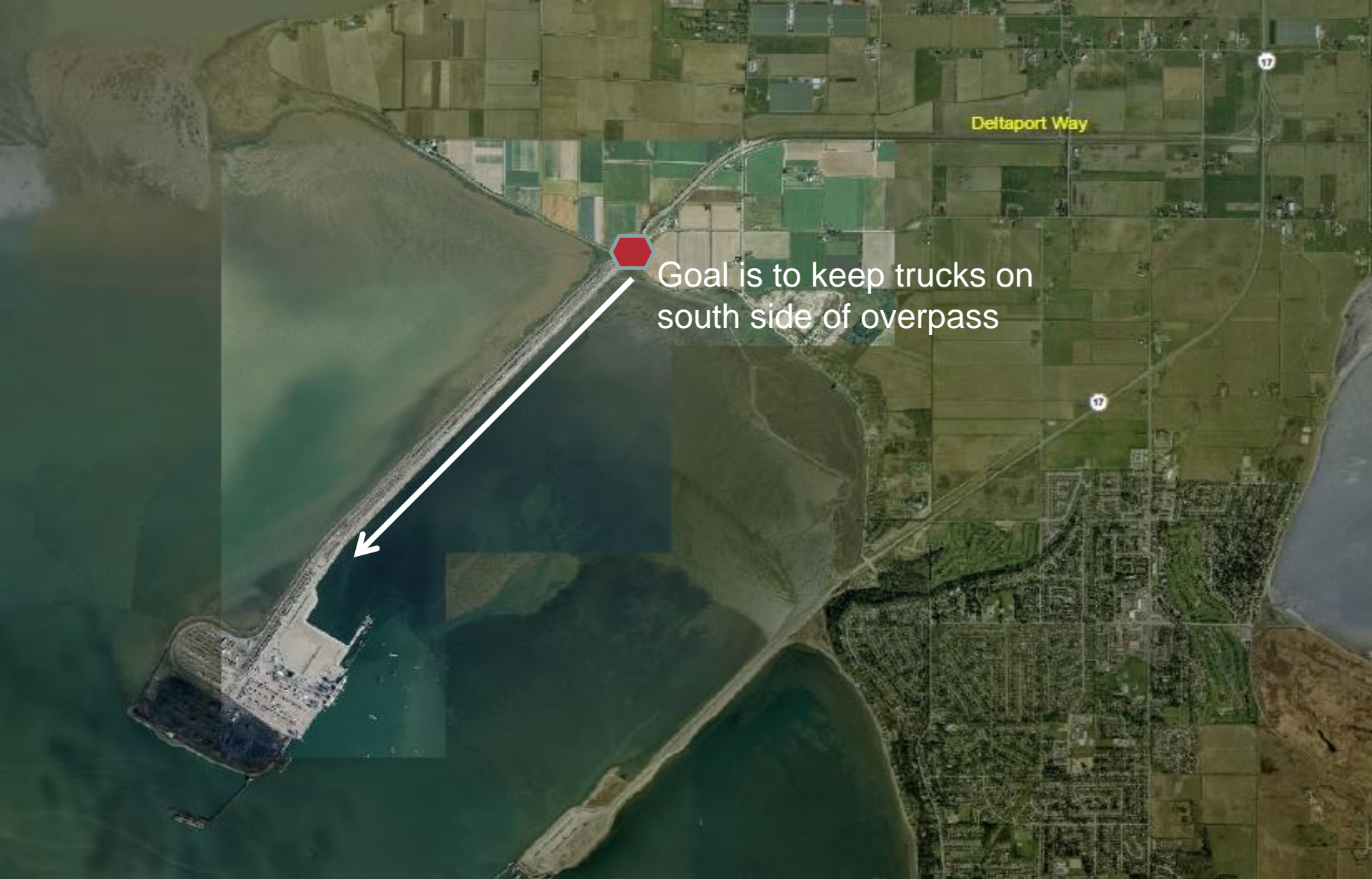
# Meeting Actions

- Traffic Management Plan by July 1, 2009
- Complaints process to be developed jointly by TSI, PMV and Delta.
- MoT to look into potential for “no post” barriers at 57b.

# Commitments

- Goal is to keep staging to Deltaport Causeway.
- Delta and PMV will be put on TSI's notification list to be advised of operations issues such as "computer glitches" or other issues that could impact traffic.





Goal is to keep trucks on south side of overpass

Deltaport Way



PORT METRO  
vancouver

portmetrovancover.com



PORT METRO  
**vancouver**

Questions?

